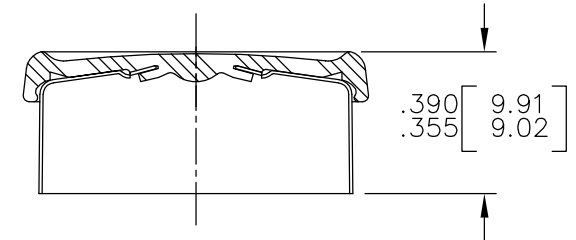
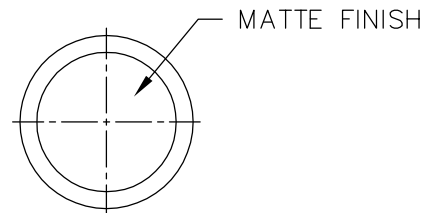
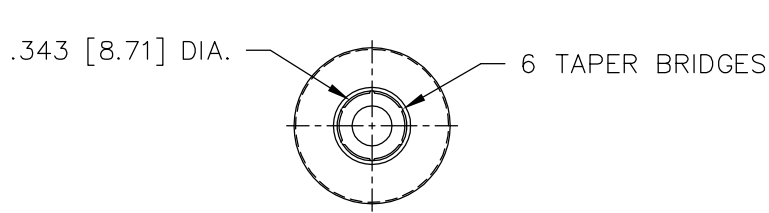
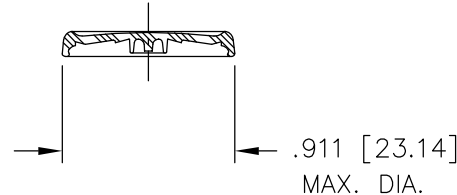
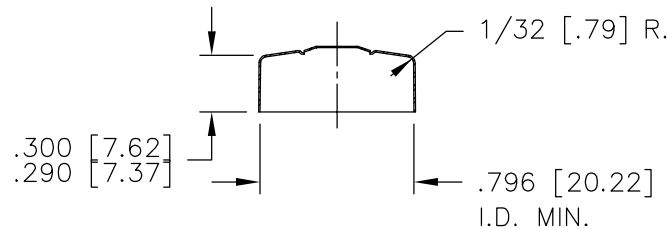


UNCONTROLLED COPY

Notification of changes will not be provided unless requested



ASSEMBLED 2/1




ALUMINUM SEAL
MAT'L.: .008 ±.001 [.20 ±.02]

PLASTIC BUTTON

CAVITY MARKING IS POSSIBLY VISIBLE WHEN LOOKING ON THE INNER ALUMINUM SHELL SURFACE.

NOTE: VALUES DENOTED BY [X.XX] ARE IN MILLIMETERS.

TOLERANCES UNLESS NOTED						APPROVALS	DATE					
DECIMAL	METRIC					DWN.						
.XX ± .01	.X ± .3					<i>C. Whitson</i>	20 JUL.'00	TITLE: 20mm 6 BRIDGES FLIP OFF TruEdge® SEAL MATTE TOP BUTTON				
.XXX ± .005	.XX ± .13					CHK'D.						
.XXXX ±	.XXX ±					<i>A. G. Knight</i>	21 JUL.'00	SCALE: 1:1 OR AS NOTED				
FRACTIONAL: INCH: ± 1/64		B	14 APR 2020	SAP 200019511	HG	FJM	DWG. APPVD.					
ANGULAR: ± 1°		A	OCT'00	ECN#10276.(CHANGED NAME TO			<i>E. C. Keirstead</i>	21 JUL.'00	MAT'L.		TOOL CODE:	
SURFACE FINISH: ✓		MATTE TOP BUTTON WAS D-I-D BUTTON)				CLW	EK	TOOL ENGR.	SEE ABOVE			
THE INFORMATION ON THIS DRAWING IS PROPRIETARY. THIS INFORMATION SHALL NOT BE DISCLOSED, REPRODUCED IN ANY FORM OR USED FOR ANY PURPOSE, WITHOUT PRIOR WRITTEN CONSENT OF WEST PHARMACEUTICAL SERVICES.		REV.	DATE	DESCRIPTION	DR.	APP.	<i>A. G. Knight</i>	21 JUL.'00	DRAWING NO: 20-F-A-729			
		REVISIONS						N/A				21 JUL.'00
		DO NOT SCALE DRAWING						APPRD	N/A	21 JUL.'00	B	A
		REFERENCE DWG'S.										