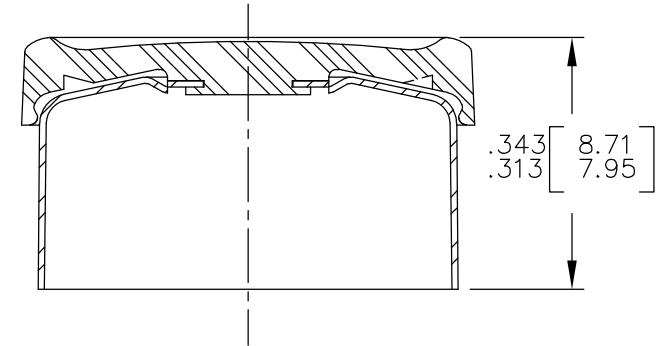
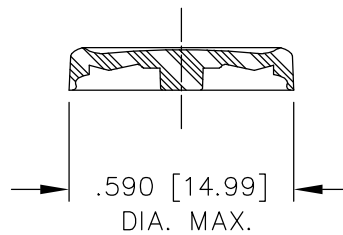
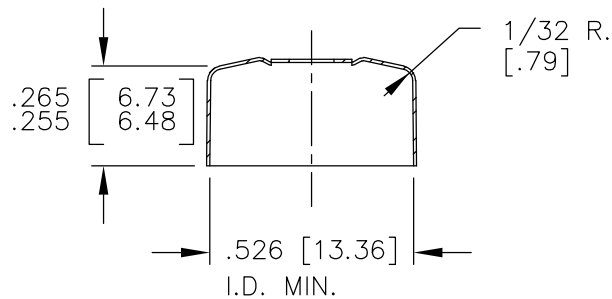
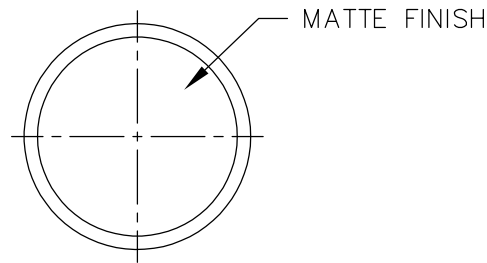
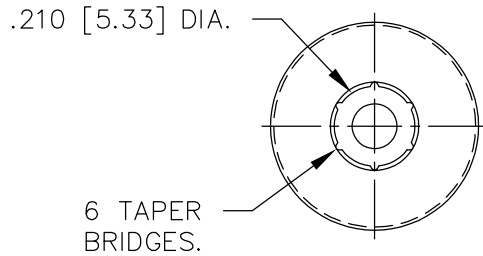


UNCONTROLLED COPY

Notification of changes will not be provided unless requested




ASSEMBLED
SCALE: 4/1

ALUMINUM SEAL
MAT'L.: .008±.001 [.20±.02]

PLASTIC BUTTON

CAVITY MARKING IS POSSIBLY VISIBLE WHEN LOOKING ON THE INNER ALUMINUM SHELL SURFACE.

NOTE: VALUES DENOTED BY [X.XX] ARE IN MILLIMETERS.

TOLERANCES UNLESS NOTED						APPROVALS		DATE					
DECIMAL	METRIC												
.XX ± .01	.X ± .3					DWN.				TITLE: 13mm 6 BRIDGES FLIP OFF LONG TruEdge® SEAL MATTE TOP BUTTON			
.XXX ± .005	.XX ± .13					<i>C. Whitson</i>	08 APR.'03						
.XXXX ±	.XXX ±					CHK'D.				SCALE: 2:1 OR AS NOTED			
						<i>G. Rubel</i>	08 APR.'03						
FRACTIONAL: INCH: ± 1/64 ANGULAR: ± 1' SURFACE FINISH: ✓						DWG. APPVD.				MAT'L. SEE ABOVE		TOOL CODE:	
		A	25 MAR 2020	SAP 200019511	HG FJM	<i>E. C. Keirstead</i>	08 APR.'03			DRAWING NO:		REV.	SIZE
THE INFORMATION ON THIS DRAWING IS PROPRIETARY. THIS INFORMATION SHALL NOT BE DISCLOSED, REPRODUCED IN ANY FORM OR USED FOR ANY PURPOSE, WITHOUT PRIOR WRITTEN CONSENT OF THE WEST COMPANY.		REV.	DATE	DESCRIPTION	DR.	APP.	<i>A. G. Knight</i>	08 APR.'03		13-F-A-626		A	A
		REVISIONS					N/A	08 APR.'03					
DO NOT SCALE DRAWING		REFERENCE DWG'S.					APPRD	N/A	08 APR.'03				