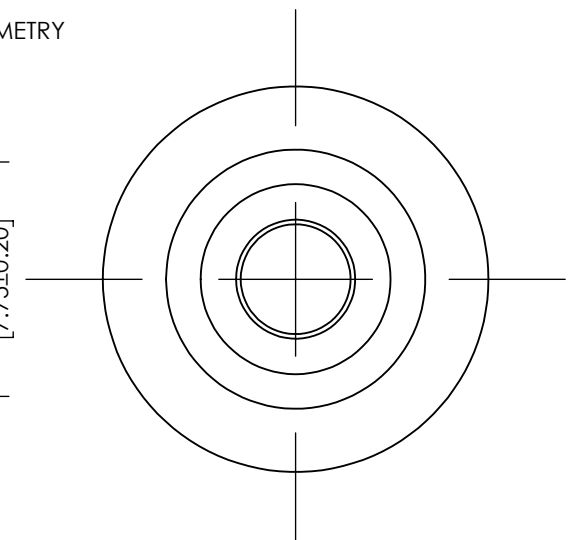
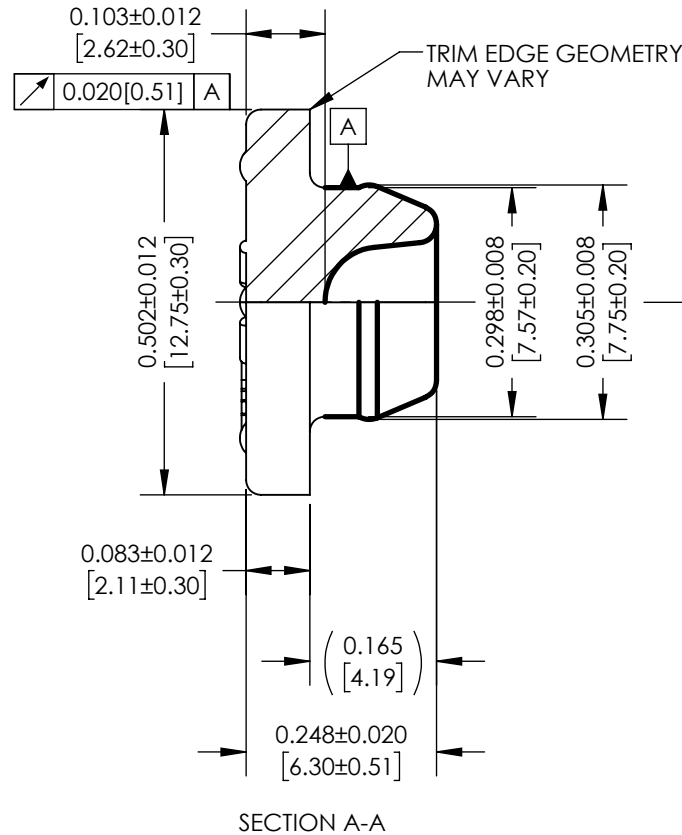
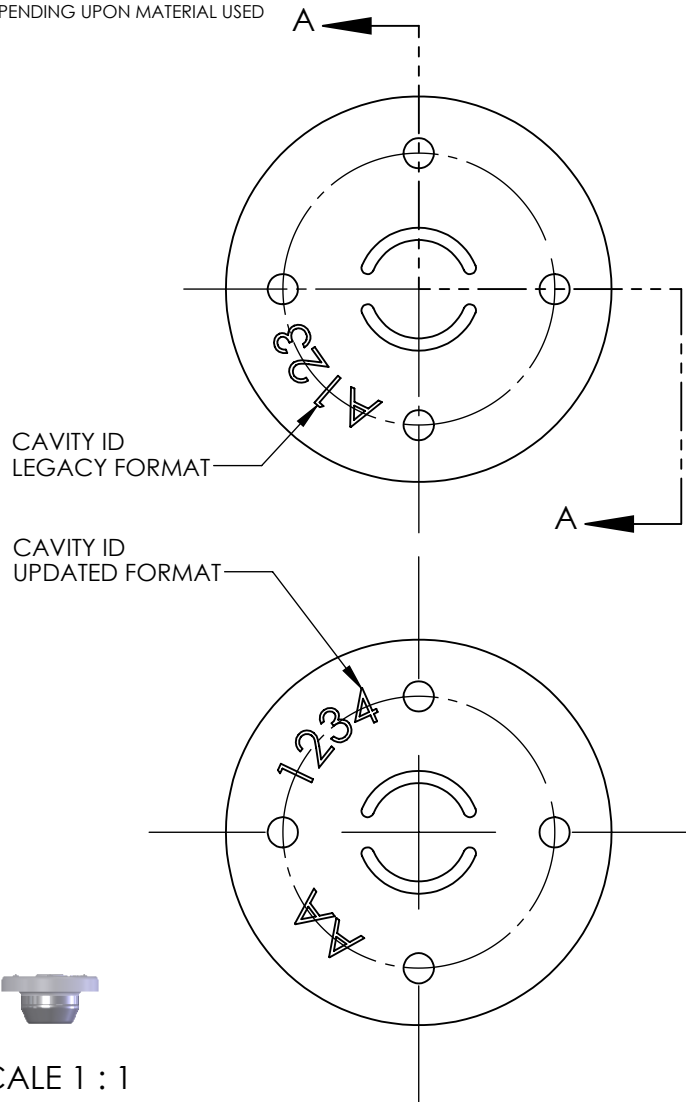


NOTES:

1. A MAX. OF 0.005" [0.13] RADIUS ALLOWABLE ON ALL SHARP CORNERS.
2. VALUES DENOTED BY [X.XX] ARE IN MILLIMETERS.
3. DIMENSIONS AND TOLERANCES MAY VARY DEPENDING UPON MATERIAL USED

THICK LINE INDICATES FLUROTEC FILM COVERAGE


UNCONTROLLED COPY
Notification of changes will not be provided unless requested



SCALE 1 : 1

REV.	DATE	DESCRIPTION	DR.	APP.
5	23AUG22	SAP 200017883. Redrawn in SolidWorks.	TRE	HG
4	NOV10	ECN# 11231 (ADDED CAVITY I.D.)	CPC	RB
3	MAY05	ECN# 10688 (UPDATE TOLERANCES & REF. DIMENSION.)	KN	RBM
2	JAN05	ECN# 10662 (.305" [7.75] WAS .305 [7.74])	CPC	RBM
1	NOV01	ECN# 10406 (REVISION 1 IS FOR OFFICIAL RELEASE, ETC.)	CPC	JAR
		REVISIONS		

N/A		N/A		N/A		N/A	
Nom S.A. (0.675) In.^(2) (4.36) Cm.^(2)				TOLERANCES UNLESS NOTED		APPROVALS	
DECIMAL		METRIC		DWN.		DATE	
.XX ± .01	.X ± .3	.XXX ± .005	.XX ± .13	C. P. Ching		07 JUN 00	
.XXXX ±	.XXX ±			CHKD. D. Schinski		16 NOV 01	
FRACTIONAL: INCH: ± 1/64				DWG. APPVD. J. Rodgers		19 NOV 01	
ANGULAR: ± 1°				TOOL ENGR. N/A		19 NOV 01	
SURFACE FINISH: √				PROJ. ENGR. D. Schinski		16 NOV 01	
THE INFORMATION ON THIS DRAWING IS PROPRIETARY. THIS INFORMATION SHALL NOT BE DISCLOSED, REPRODUCED IN ANY FORM OR USED FOR ANY PURPOSE, WITHOUT PRIOR WRITTEN CONSENT OF WEST PHARMACEUTICAL SERVICES.				APPRD. N/A		19 NOV 01	
DO NOT SCALE DRAWING				SAP Number N/A		SIZE A	



TITLE: **WPS-S2-F451**

MATL:

DRAWING AND REV. NO: **WS-789 Rev 5**

SCALE: 4:1 WEIGHT: LB. SHEET 1 OF 1